

**DEPENDABLE
PRODUCT
NEWS**

TUBELITE®

DEPENDABLE

LEADERS IN ECO-EFFICIENT STOREFRONT,
CURTAINWALL AND ENTRANCE SYSTEMS

Date: **02/28/2012**

Engineering Bulletin: **021203**

Effective Date: **03/19/2012**

Released By: **T.Trinh**

Subject: **Thermal Door**

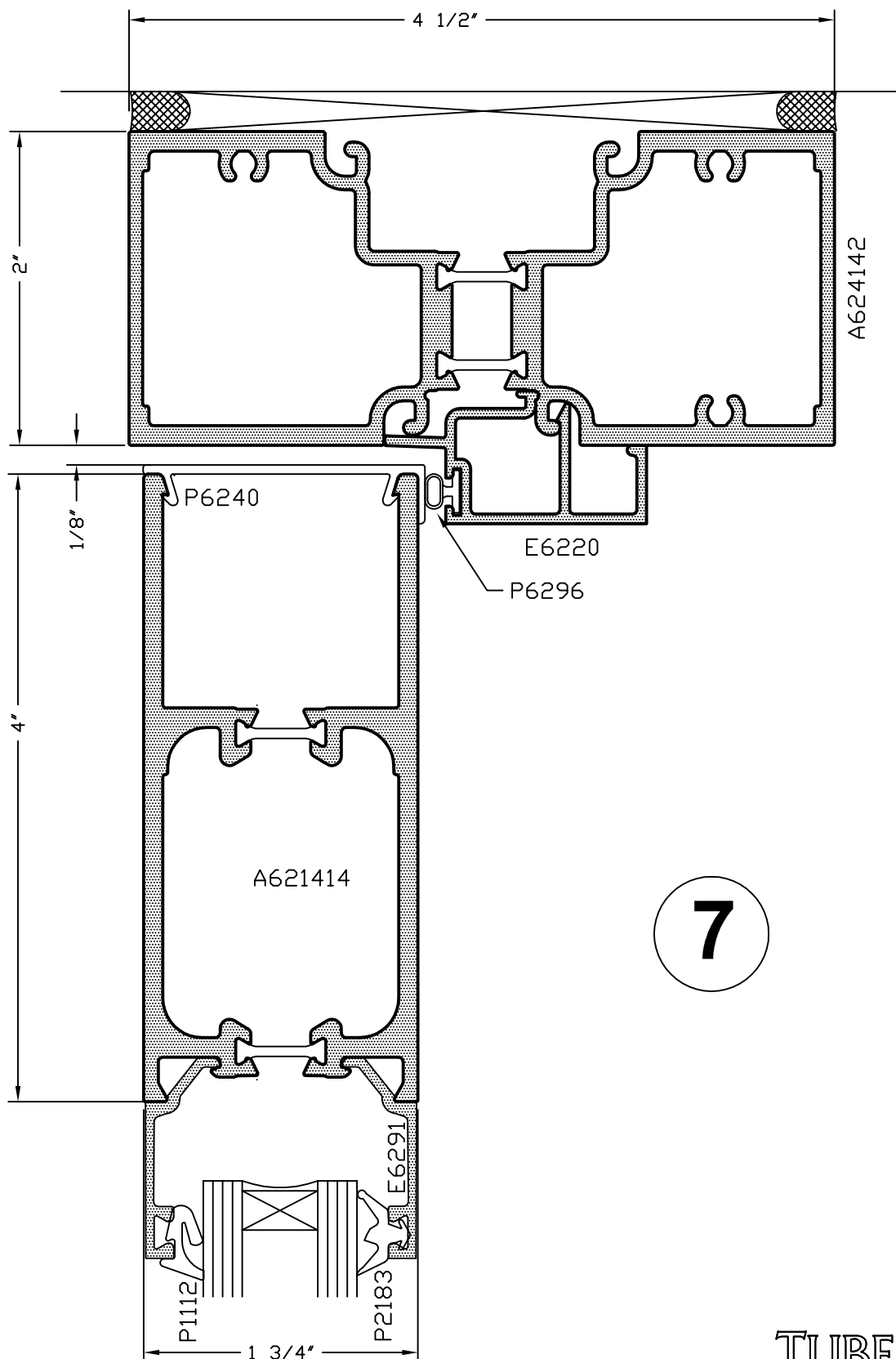
Description: Tubelite has redesigned the vertical stiles on the Thermal door. The Thermal=Block which was previously located in different plane, has now been moved so that they are located on the same plane. This also allows the vertical glass stops to be ingrated to the stiles. The vertical glass stops will be non-removable, giving a nice continous look. The horizontal glass stops will remain the same, removable. The gaskets used will change to P1112 and P2183. The door will require a new method of glass installation and cross blocking the glass. The thermal frames will be provided the bulb gasket instead of the pile weathering. The redesigned Thermal door will be release on March 19th, 2012. Please see attached for details.

Price: Will remain the same.



Thermal Entrances Head

CAD DETAIL FILE NO.
111TDHEAD

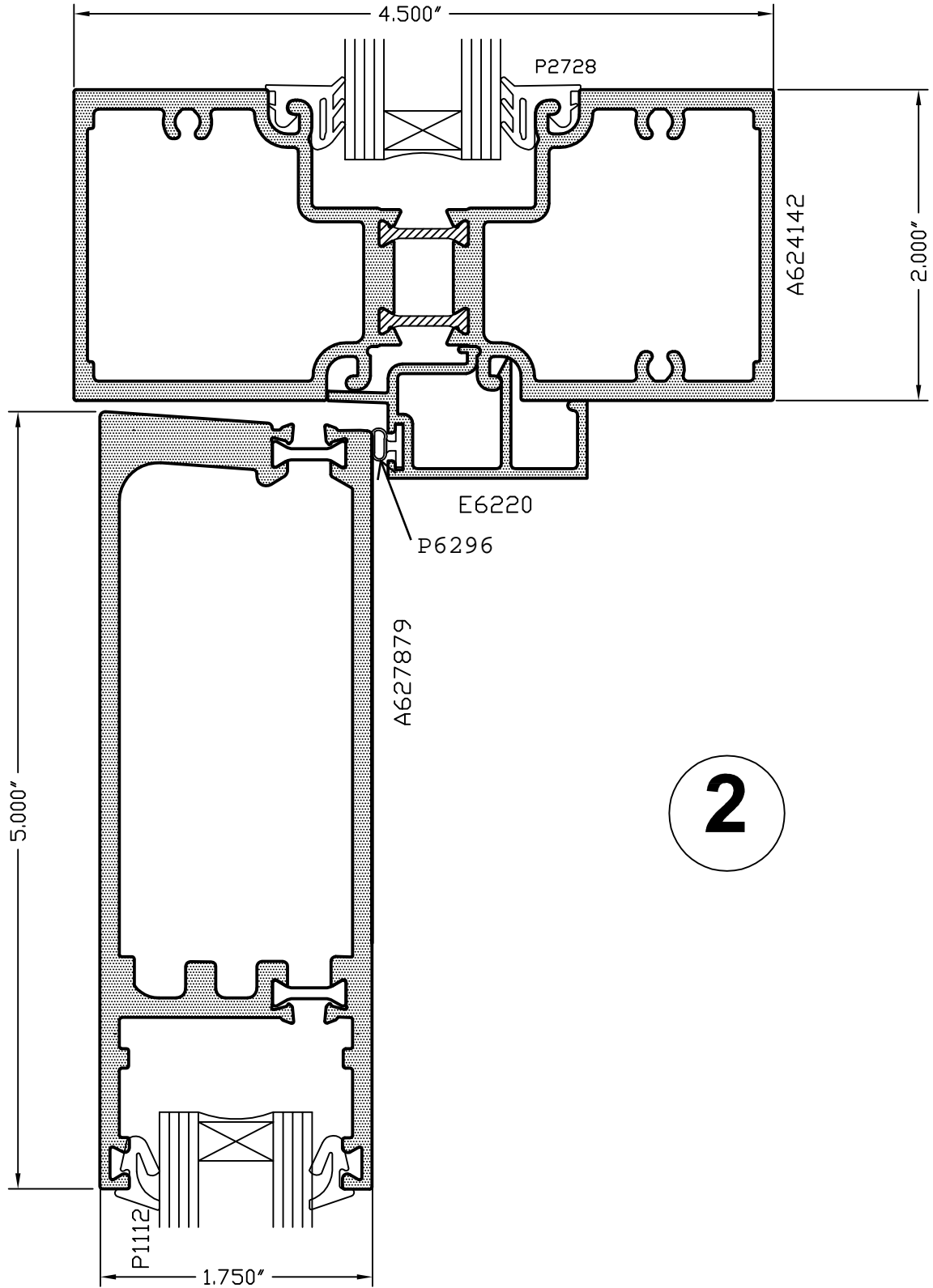


*SEALANT, ROD, & ANCHORS NOT BY TUBELITE

4.08

Thermal Entrances Door Jamb with Sidelight

CAD DETAIL FILE NO.
111TDJWSL



THERMAL DOOR SETTING BLOCK/WEDGE BLOCK INSTALLATION

1. - INSTALL TOP & BOTTOM INTERIOR GLASS STOPS WITH GASKET P2183.



P2183

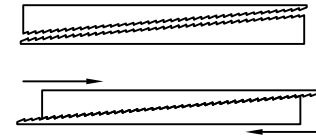
2. - PLACE SELF ADHESIVE SETTING BLOCKS IN 2 LOCATIONS.
 (1) @ BOTTOM HORZ. 3-4' FROM HINGE STILE
 (2) @ HINGE STILE 3-4' UP FROM BOTTOM HORZ.
3. - INSTALL GLASS IN DOOR, PLACING THE GLASS INTO THE LOCK SIDE POCKET FIRST, THEN SLIDING IT BACK TO REST UP AGAIN THE ADHESIVE SETTING BLOCKS ON HINGE SIDE.
4. - STRETCH THE "W" ANTI WALKING BLOCK AND SLIDE IT BETWEEN GLASS AND INTERGRATED GLASS CLIP INTO TOP LOCK SIDE. PUSH IT ALL THE WAY UNTIL IT CLEARS GLASS AND LOCKS INTO PLACE.



Make sure anti-block is not twisted when installed.

5. - SQUARE UP DOOR AS DESIRED.

6. - PLACE TWO SETS OF WEDGE BLOCKS AS SHOWN IN PICTURE BELOW. IF TOGETHER PROPERLY THE WEDGE BLOCKS WILL INTERLOCK AND FORM TWO FLAT SURFACES. PLACE SETS OF WEDGE BLOCKS ON TOP OF GLASS 3-4' FROM HINGE SIDE.



7. - WITH THE WEDGE BLOCKS IN PLACE PUSH THEM TOGETHER INCREASING THE THICKNESS. PUSH TOGETHER UNTIL THEY PRESS TIGHTLY AGAINST THE GLASS.
8. - INSTALL EXTERIOR WEDGE GASKET P1112 TO ALL VERTICAL GLASS STOPS AND EXTERIOR TOP AND BOTTOM GLASS STOPS.



P1112

9. - TO SQUARE UP THE DOOR IN THE FUTURE REMOVE TOP HORZ. GLASS STOP AND ADJUST WEDGE BLOCKS.