

# DEPENDABLE PRODUCT NEWS TUBELITE®

DEPENDABLE  
LEADERS IN ECO-EFFICIENT STOREFRONT,  
CURTAINWALL AND ENTRANCE SYSTEMS

Date: **05/18/16**

Engineering Bulletin: 051601

Effective Date: 05/23/16

Released By: **Greg Hall**

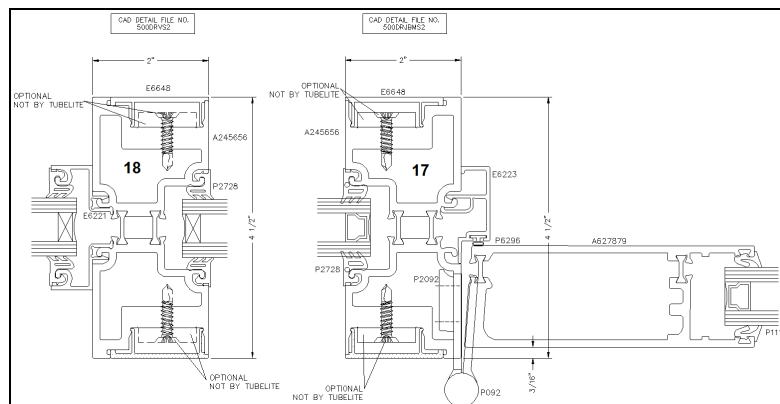
Subject: **Thermal Door Details**

**The A245656 heavy duty thermal door jamb will be obsoleted from the following effective Monday, May 23, 2016:**

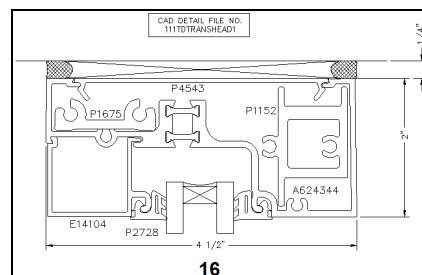
- **TU24000** perimeter sheet and standard details online
- **Price Book – p. C1.1**
- **TU24000** installation instructions
- **JDE and EZ Estimate**

**A new heavy duty door jamb for thermal door frames is currently under development and will be available soon.**

**Additionally, the TU24000 details will be updated to show the correct head member at thermal door transom frames (detail 111TDTRANSHEAD1, detail reference 16 on 500ELEV1).**



**Door Jamb Member to be Obsoleted**



**Updated Thermal Door Frame Head on TU24000**